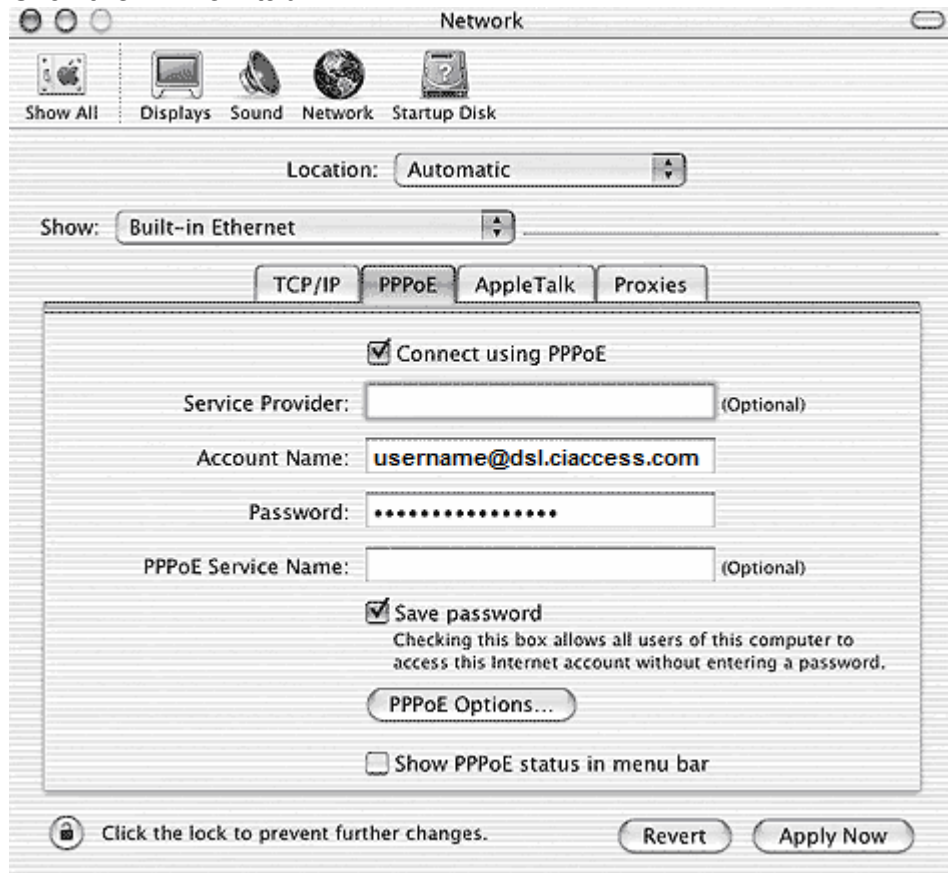


## Macintosh OS X PPPoE Configuration For DSL when NO Router is involved.

1. Click the Apple in the upper left, and then select **System Preferences** from the drop-down menu.

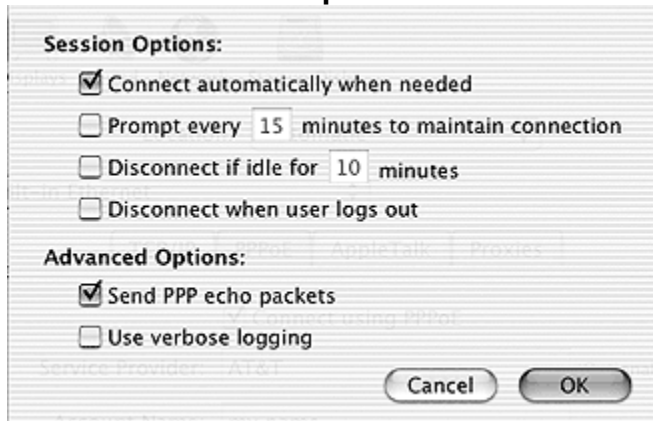


2. Click the **Network** icon.
3. From the **Show** drop-down menu, select your ethernet device.
4. Click the **PPPoE** tab.



5. Select the **Connect using PPPoE** option.
6. In the **Account Name** field, enter the username
7. In the **Password** field, enter the password.
8. Select the **Save Password** option.

9. Click on the **PPPoE Options...** button for more options.



**Note:** Setting the field **Disconnect if idle for x minutes** is not needed. There are no ramifications/extra charges for leaving the connection active, and most customers prefer to have their DSL always on. It is probably best to leave this selection disabled.

10. Click the **OK** button.
11. Click the **Save** button to finish.