

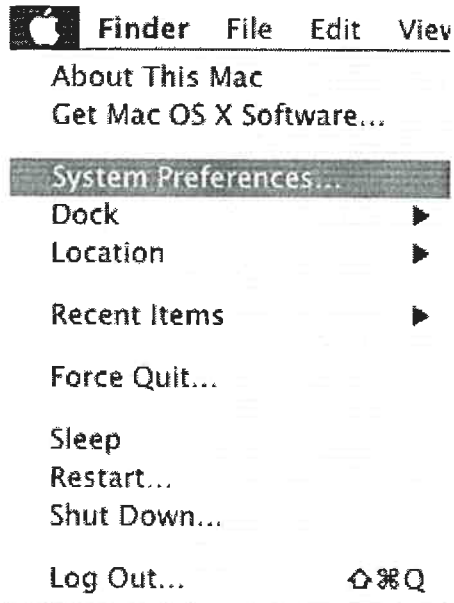
Configuring Chatham Internet Access

Macintosh OSX



To begin, start your computer, log into your Mac if required and click on the **Apple** in the upper left corner of your screen.

From the menu that appears, select **System Preferences**.



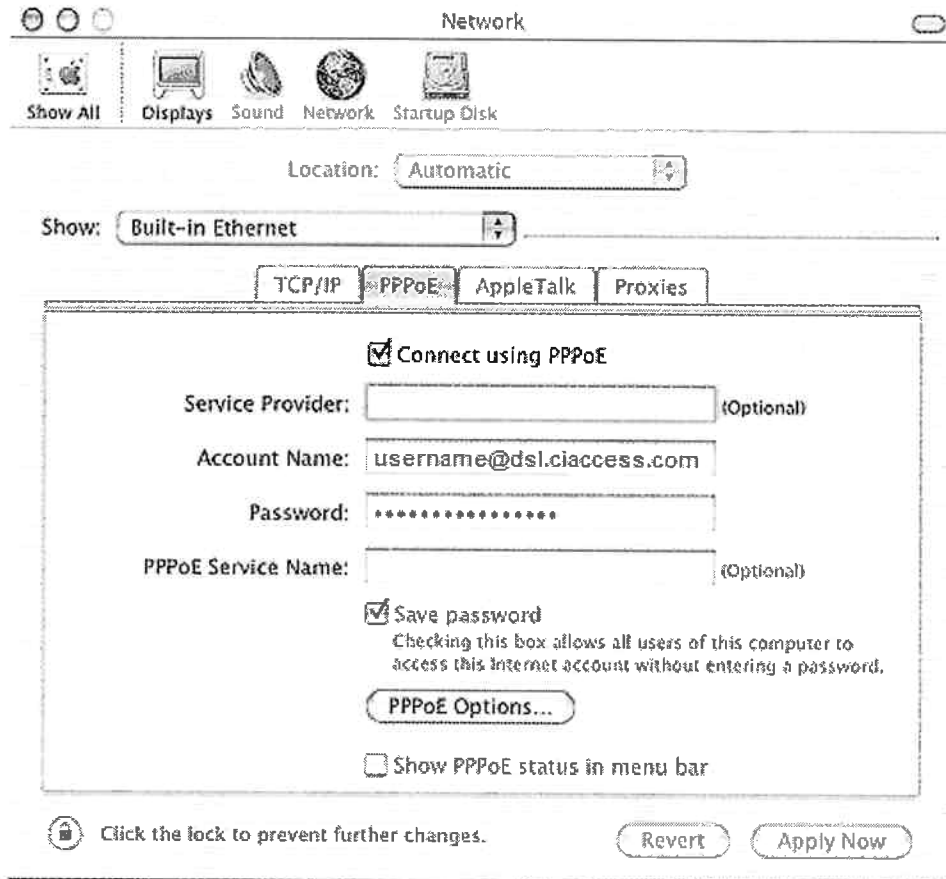
Click on the **Network** icon.

If you are configuring a **Dial-up Connection** skip to the section titled **CIAccess Dial-up**.

CIAccess DSL

From the **Show** drop-down menu, select your Ethernet device (ie: Built-in Ethernet).

Click the **PPPoE** tab, and you will be presented with the following screen.



Select the **Connect using PPPoE** option.

In the **Account Name** field, type your DSL connection user name in the following format:

username@dsl.ciaccess.com or *southkent.username@speede.com*

Type your DSL connection password in the **Password** field and check **Save Password**.

Click on the **PPPoE Options...** button.

After clicking on the **PPPoE Options...** button, you will be presented with the following screen.

Session Options:

- Connect automatically when needed
- Prompt every 15 minutes to maintain connection
- Disconnect if idle for 10 minutes
- Disconnect when user logs out

Advanced Options:

- Send PPP echo packets
- Use verbose logging

Cancel OK

Select **Connect automatically when needed** and **Send PPP echo packets**.

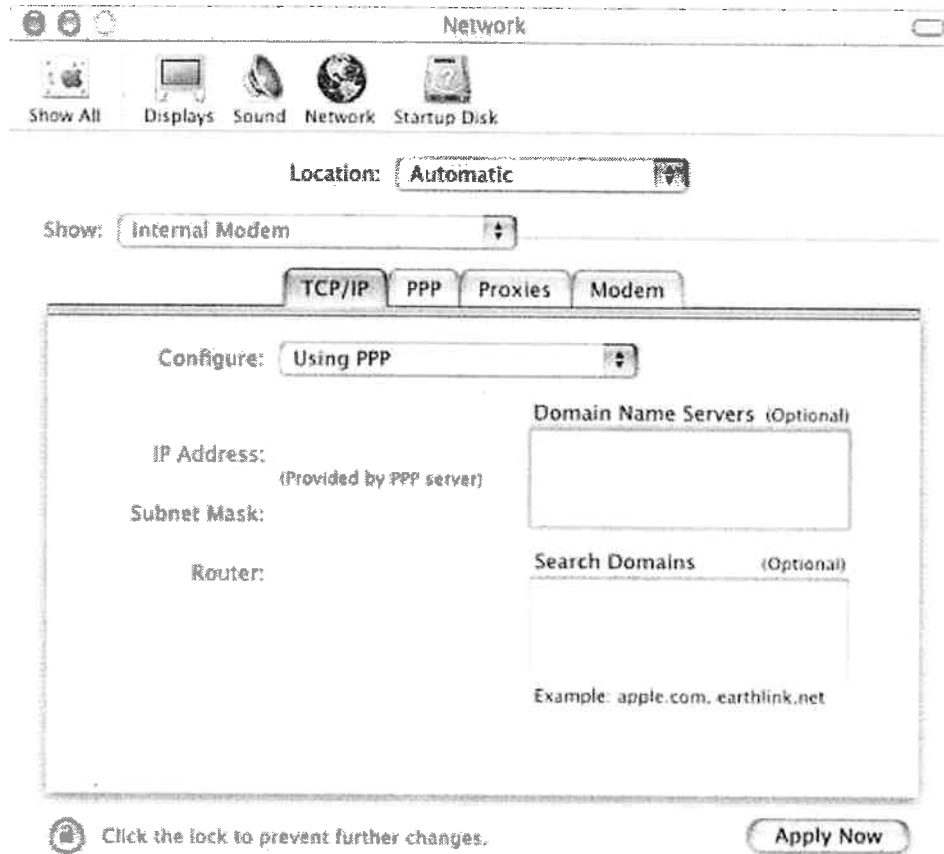
You are done, click **OK** to return to the **Network** screen then click **Save** to finish.

To configure a backup dial-up connection, start at the beginning of this document and follow the appropriate steps for configuring **CIAccess Dial-up**.

CIAccess Dial-up

From the **Show** drop-down menu, select your modem (ie: Internal Modem).

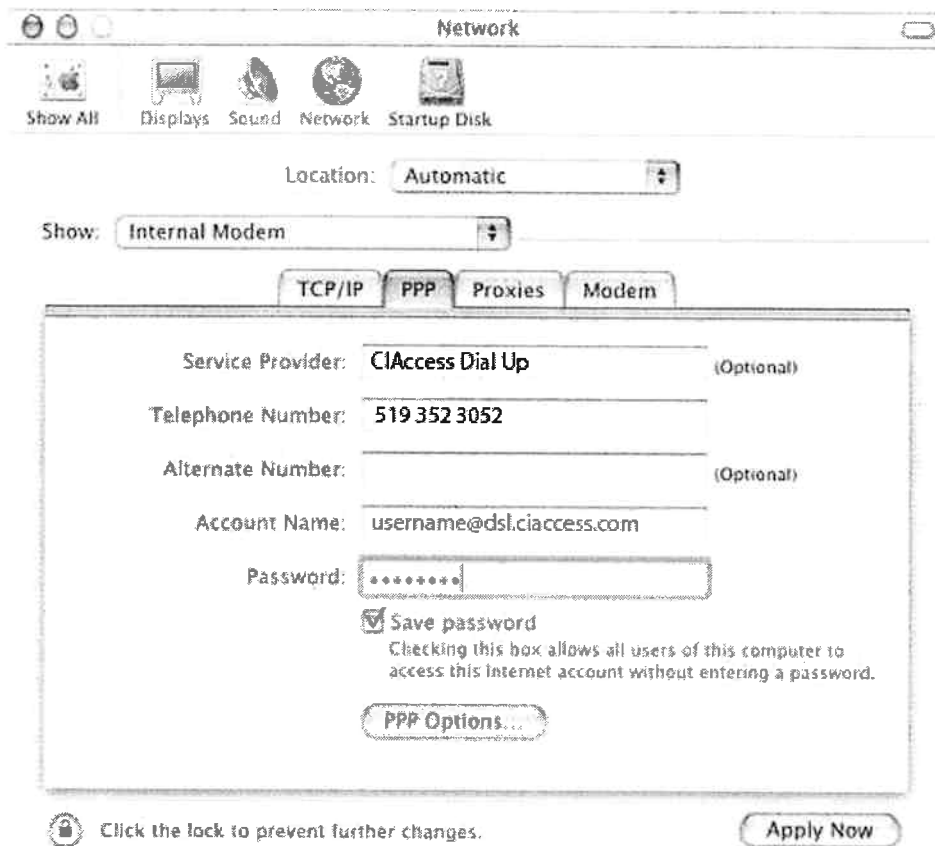
Click the **TCP/IP** tab, and you will be presented with the following screen.



From the **Configure** drop-down menu, select **Using PPP**.

Click the **PPP** tab.

After clicking the **PPP** tab, you will be presented with the following screen.



In the **Service Provider** field, type:

CIAccess Dial Up

In the **Telephone Number** field, type:

519 352 3052

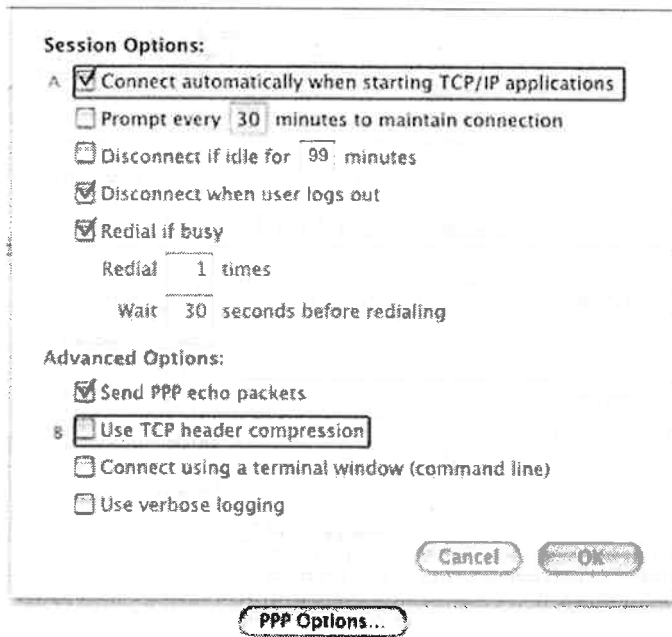
In the **Account Name** field, type your connection user name in the following format:

username@ciaccess.com or username@southkent.net

Type your connection password in the **Password** field and check **Save password**.

Click the **PPP Options...** button.

After clicking the **PPP Options...** button, you will be presented with the following screen.



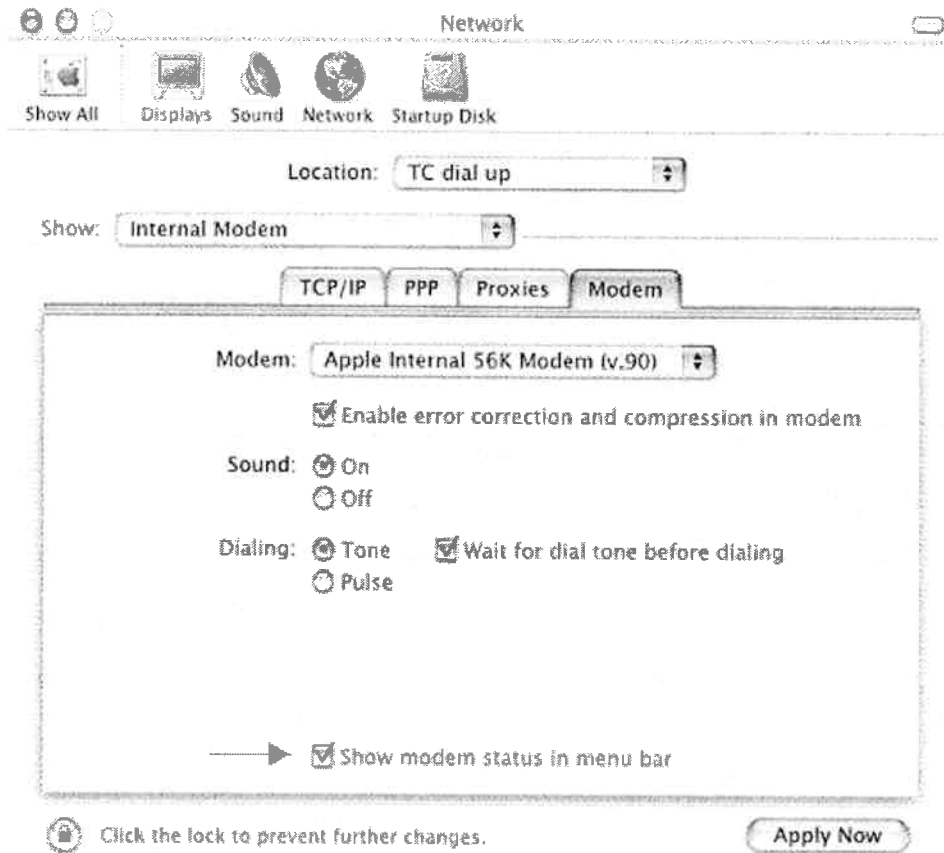
If you would like the computer to connect automatically, check **Connect automatically when starting TCP/IP applications**.

Select **Disconnect when user logs out**.

If you use Classic applications with the internet, remove the checkmark from **Use TCP header compression**.

Click **OK** to return to the **Network** screen, then click the **Modem** tab.

After clicking the **Modem** tab, you will be presented with the following screen.



Place a checkmark beside **Show modem status in menu bar** to provide a telephone icon beside your clock to connect and disconnect from the Internet.

You are done, click **Apply Now** then close this window to finish.