

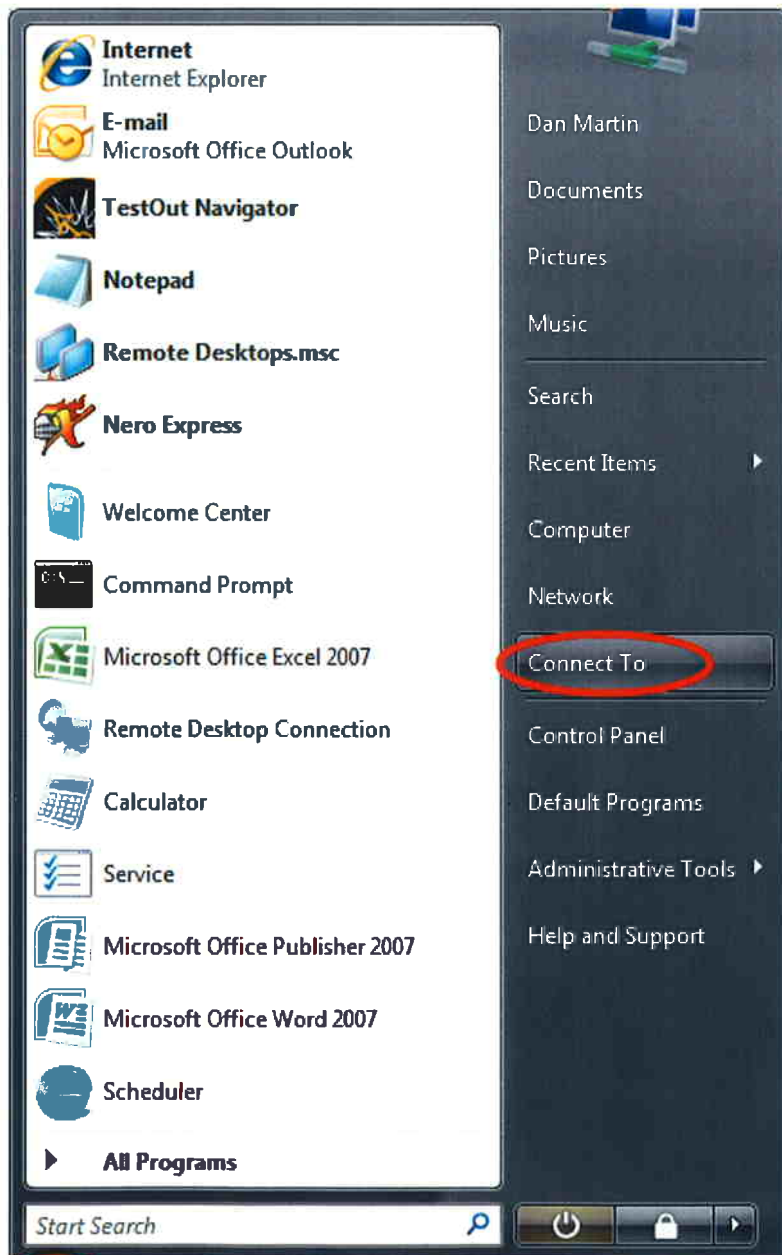
# Configuring Chatham Internet Access

## Microsoft Windows Vista



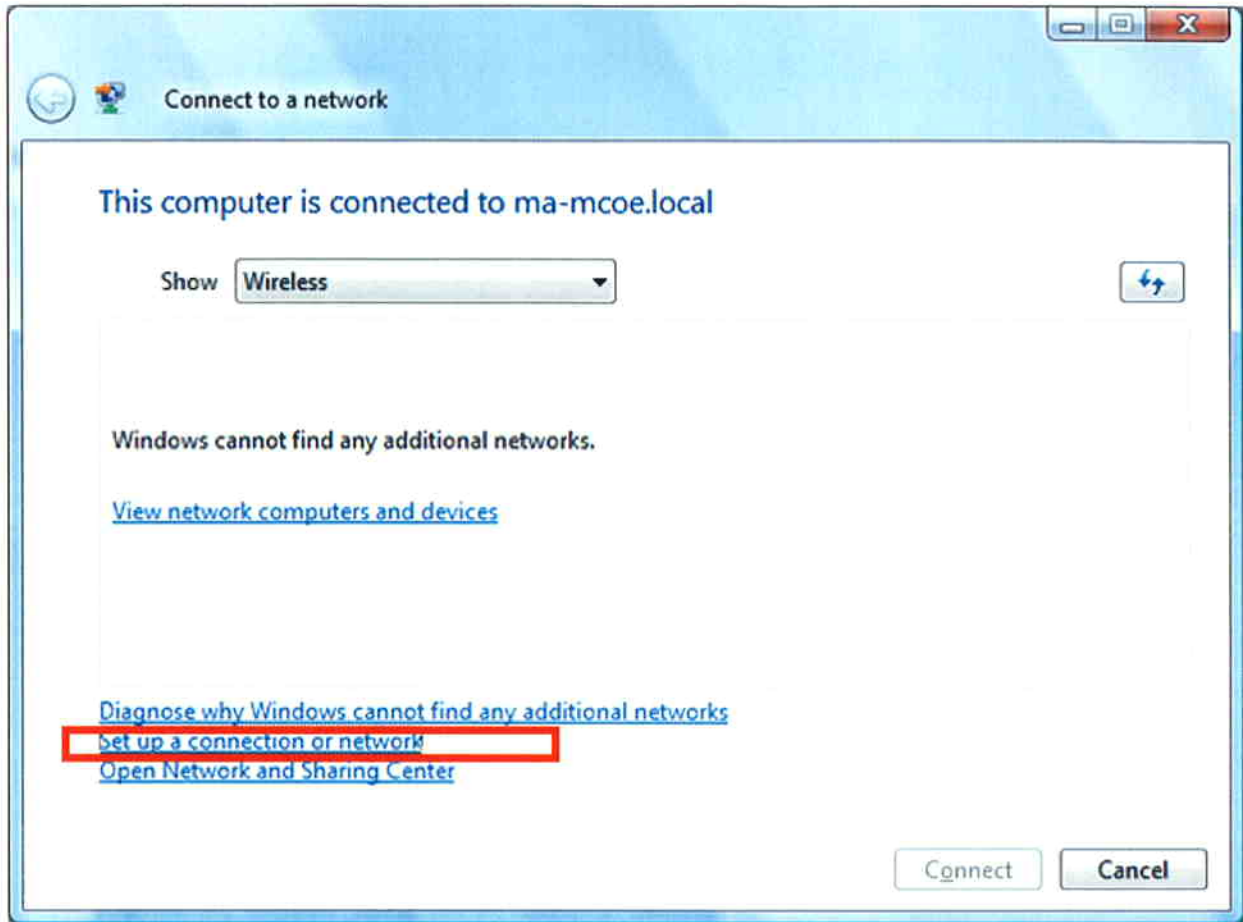
To begin, start your computer, log into windows and click on the **Blue Windows Button** in the bottom left corner of your screen.

From the menu that appears, select **Connect To**.



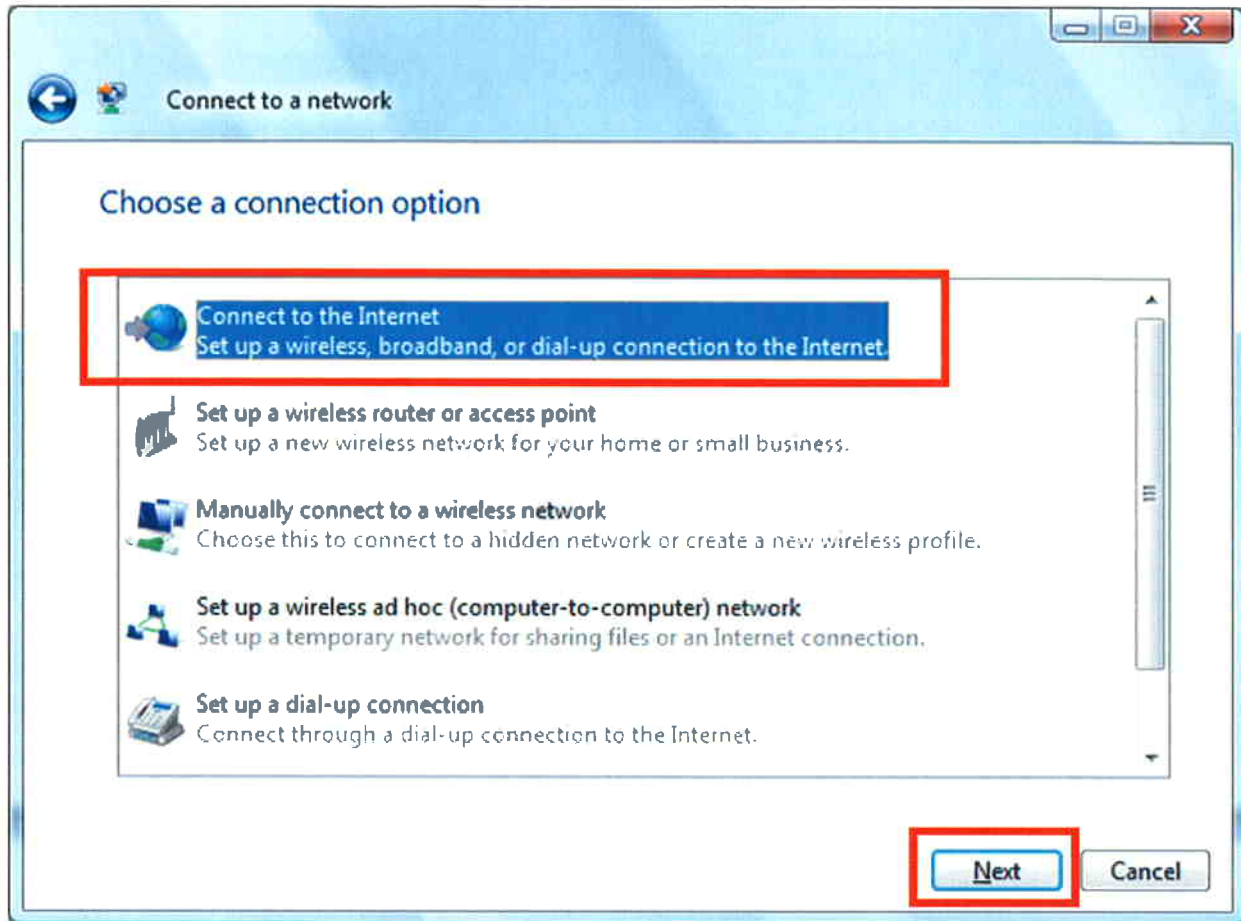
Click the windows Icon here

You will be presented with the **Connect to a network** window.



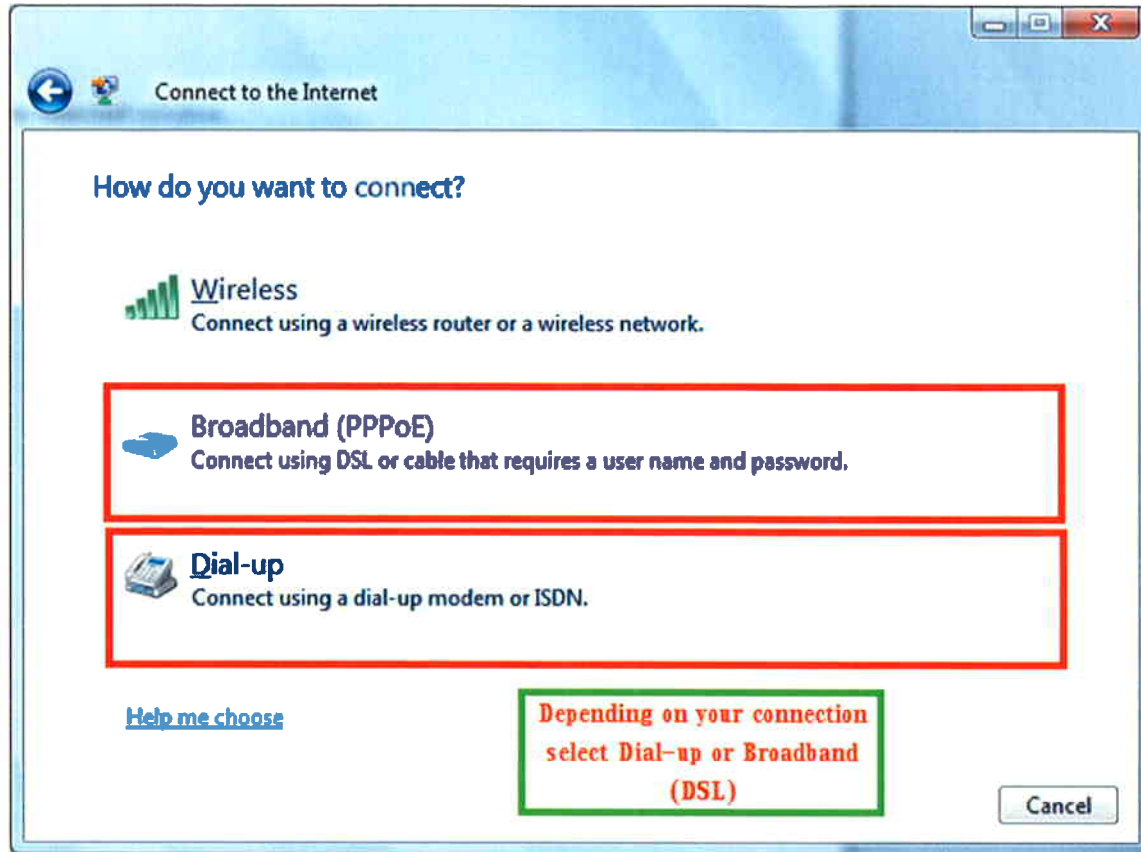
Click on **Set up a connection or network**.

You will be presented with the next **Connect to a network** window.



Ensure **Connect to the Internet** is highlighted and click the **Next** button.

You will be presented with the **Connect to the Internet** window.

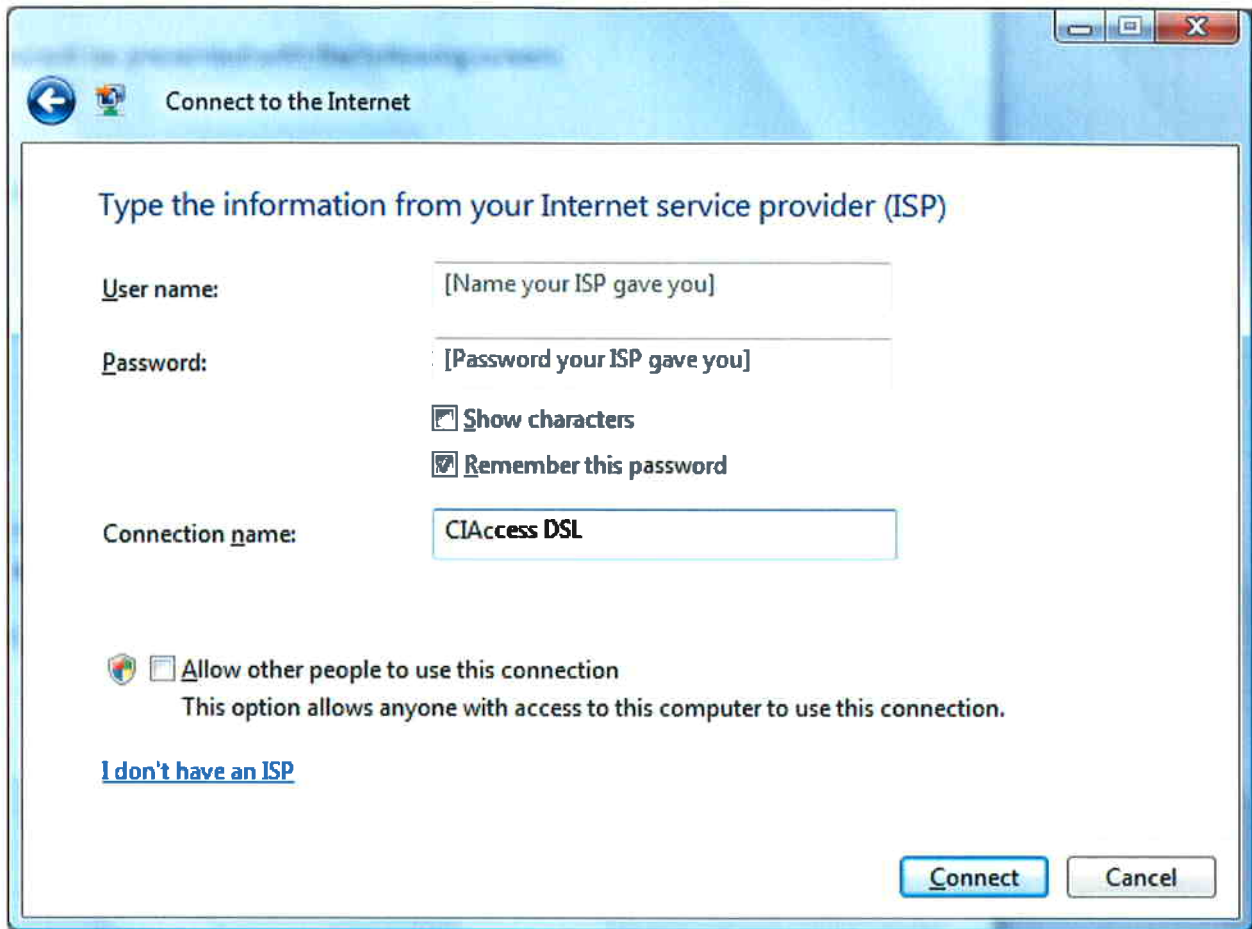


If you will be using DSL, click on the **Broadband (PPPoE)** option and continue to the **CIAccess DSL** section of this document.

If you will be using Dial-up, click on the **Dial-up** option and skip to the **CIAccess Dial-up** section of this document.

## CIAccess DSL

After selecting **Broadband (PPPoE)**, you will be presented with the following screen.



In the **User name** field, type your DSL connection user name in the following format:

*username@dsl.ciaccess.com or southkent.username@speede.com*

Type your DSL connection password in the **Password** field and check **Remember this password**.

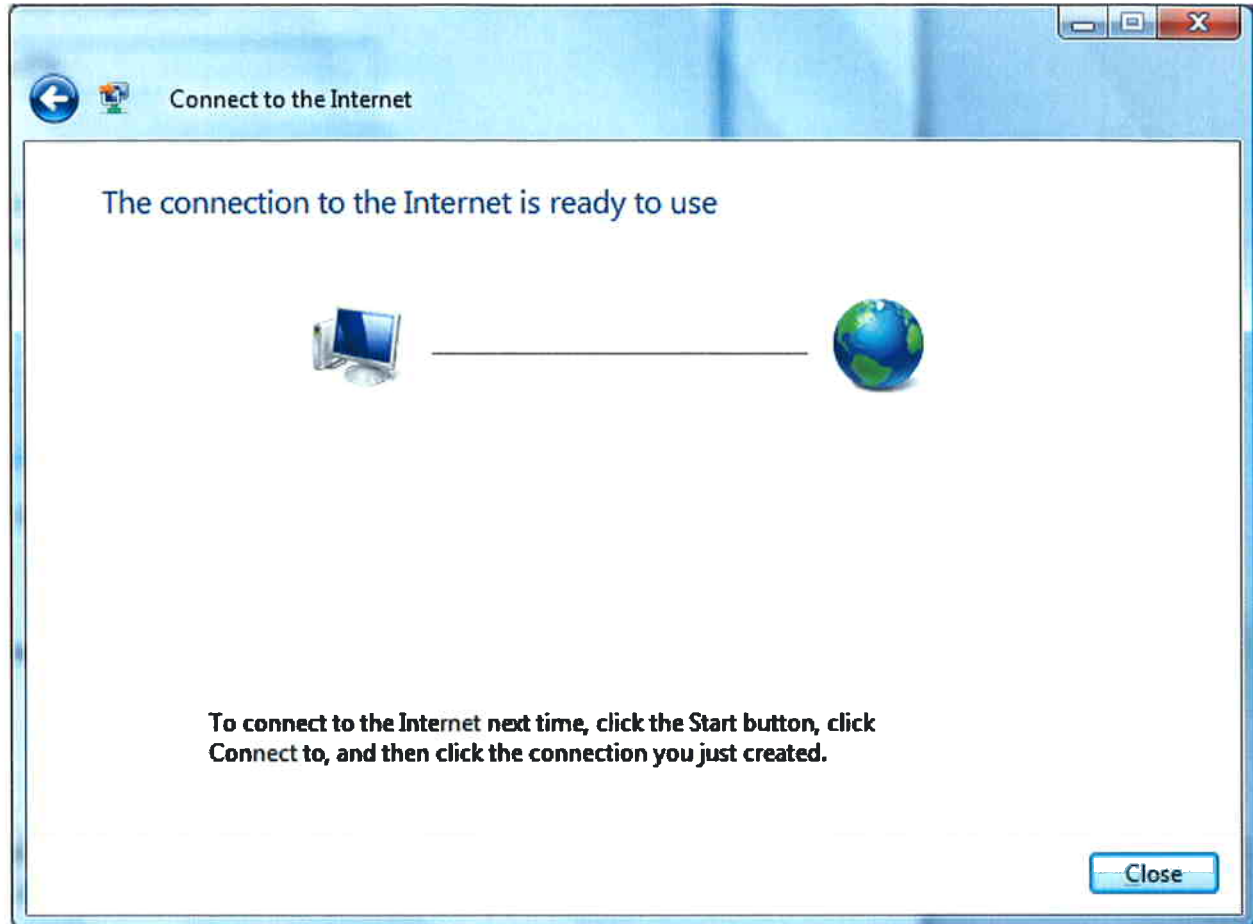
In the **Connection name** field, type:

*CIAccess DSL*

If more than one person logs into this computer, you will need to check **Allow other people to use this connection** in order for them to have access to the internet.

Once all the fields have been filled out, click **Connect** to test your connection.

If the connection is successful, you will be presented with the following screen.



You are done, click **Close** to finish.

To configure a backup dial-up connection, start at the beginning of this document and follow the appropriate steps for configuring **CIAccess Dial-up**.