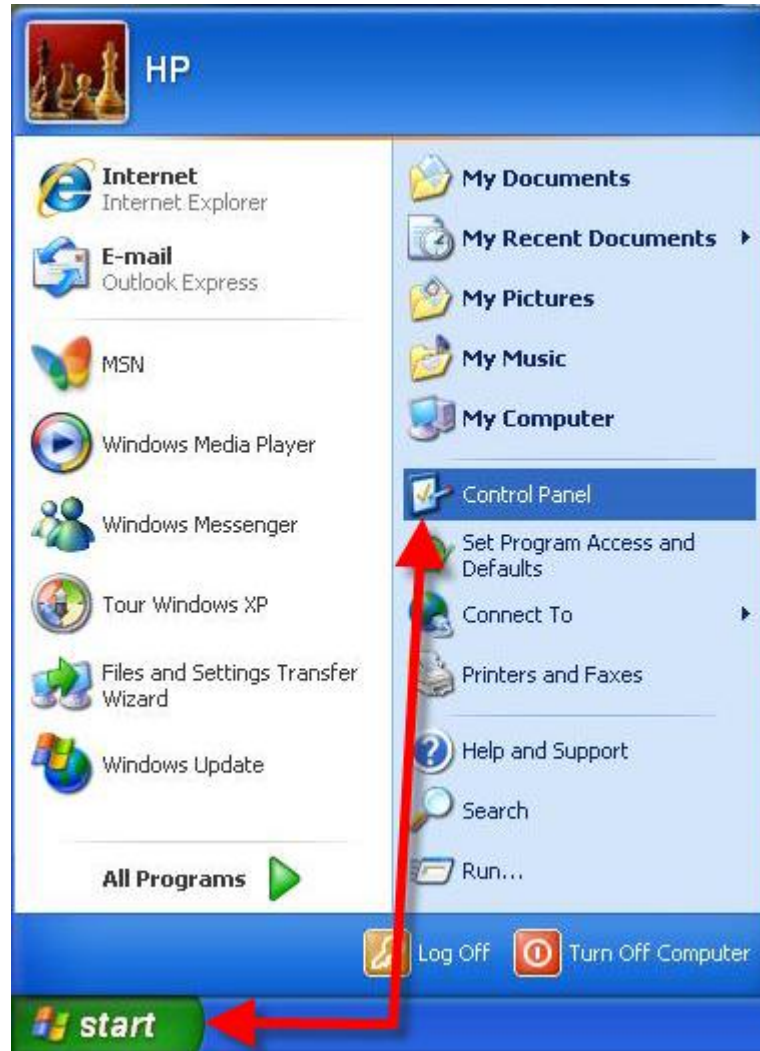


Dial-Up setup - Windows XP

1. To manually setup dial-up internet in Windows XP. Click start, go to control panel.

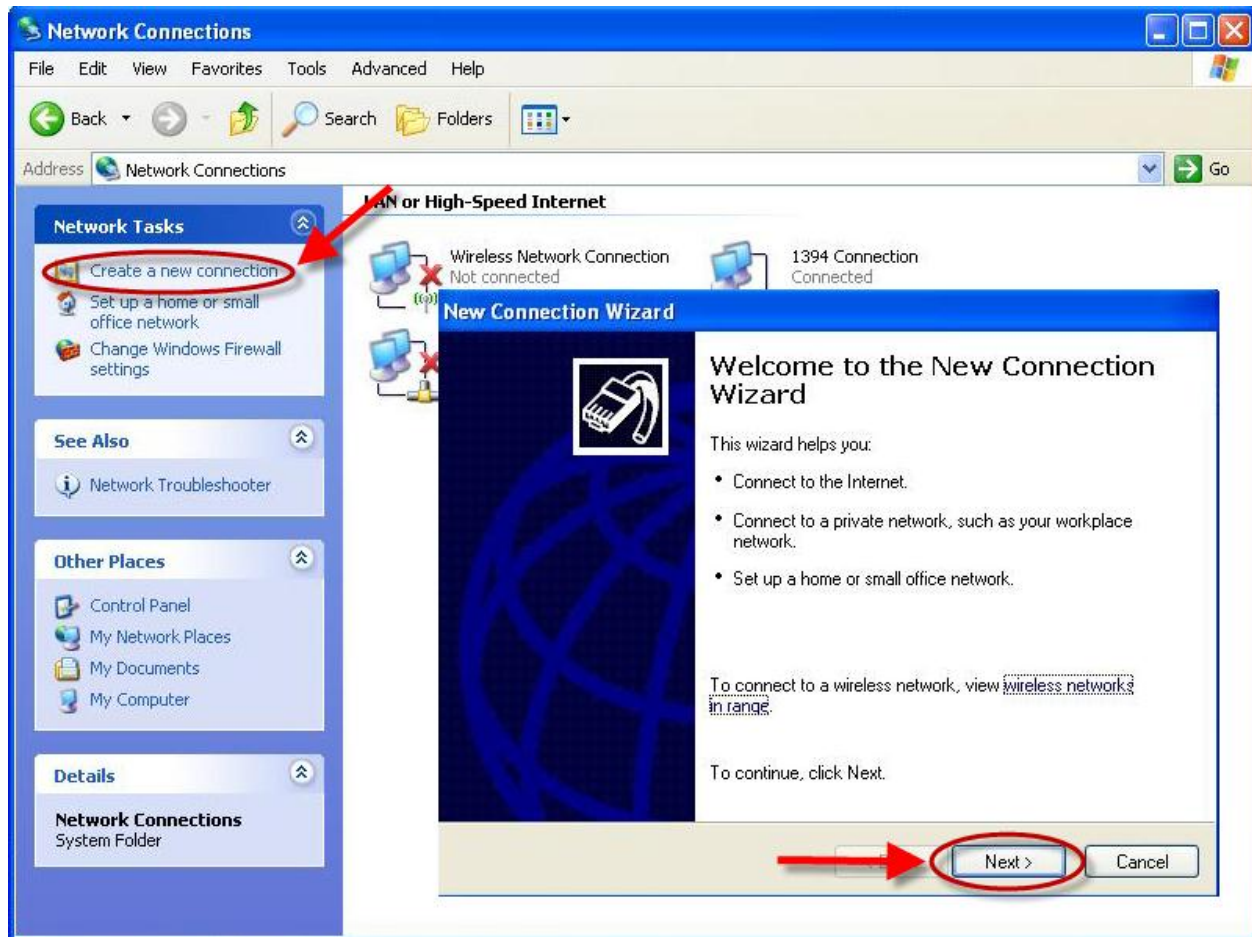


2. Once you're into the control panel, find Network connections and double click.



Dial-Up setup - Windows XP

3. In network connections, click on create a new connection, the New Connection Wizard will start. Click Next.



Dial-Up setup - Windows XP

New Connection Wizard
Network Connection Type
What do you want to do?

- Connect to the Internet** 1.
Connect to the Internet so you can browse the Web and read email.
- Connect to the network at my workplace
Connect to a business network (using dial-up or VPN) so you can work from home, a field office, or another location.
- Set up a home or small office network
Connect to an existing home or small office network or set up a new one.
- Set up an advanced connection
Connect directly to another computer using your serial, parallel, or infrared port, or set up this computer so that other computers can connect to it.

2. [Back] [Next >] [Cancel]

New Connection Wizard
Getting Ready
The wizard is preparing to set up your Internet connection.

How do you want to connect to the Internet?

- Choose from a list of Internet service providers (ISPs)
- Set up my connection manually** 3.
For a dial-up connection, you will need your account name, password, and a phone number for your ISP. For a broadband account, you won't need a phone number.
- Use the CD I got from an ISP

4. [Back] [Next >] [Cancel]

New Connection Wizard
Internet Connection
How do you want to connect to the Internet?

- Connect using a dial-up modem** 5.
This type of connection uses a modem and a regular or ISDN phone line.
- Connect using a broadband connection that requires a user name and password
This is a high-speed connection using either a DSL or cable modem. Your ISP may refer to this type of connection as PPPoE.
- Connect using a broadband connection that is always on
This is a high-speed connection using either a cable modem, DSL or LAN connection. It is always active, and doesn't require you to sign in.

6. [Back] [Next >] [Cancel]

New Connection Wizard
Connection Name
What is the name of the service that provides your Internet connection?

Type the name of your ISP in the following box.

ISP Name
Chatham Internet Access 7.

The name you type here will be the name of the connection you are creating.

8. [Back] [Next >] [Cancel]

New Connection Wizard
Phone Number to Dial
What is your ISP's phone number?

Type the phone number below.

Phone number:
519-352-3052 9.

You might need to include a "1" or the area code, or both. If you are not sure you need the extra numbers, dial the phone number on your telephone. If you hear a modem sound, the number dialed is correct.

10. [Back] [Next >] [Cancel]

New Connection Wizard
Internet Account Information
You will need an account name and password to sign in to your Internet account.

Type an ISP account name and password, then write down this information and store it in a safe place. (If you have forgotten an existing account name or password, contact your ISP.)

User name: username@ciaccess.com 11.

Password: 12.

Confirm password: 13.

- Use this account name and password when anyone connects to the Internet from this computer
- Make this the default Internet connection

14. [Back] [Next >] [Cancel]

Dial-Up setup - Windows XP

Finally, you have the option to add a shortcut to the desktop (just simply place a checkmark in the box) click Finish.



You should be setup now to access the dialup service.