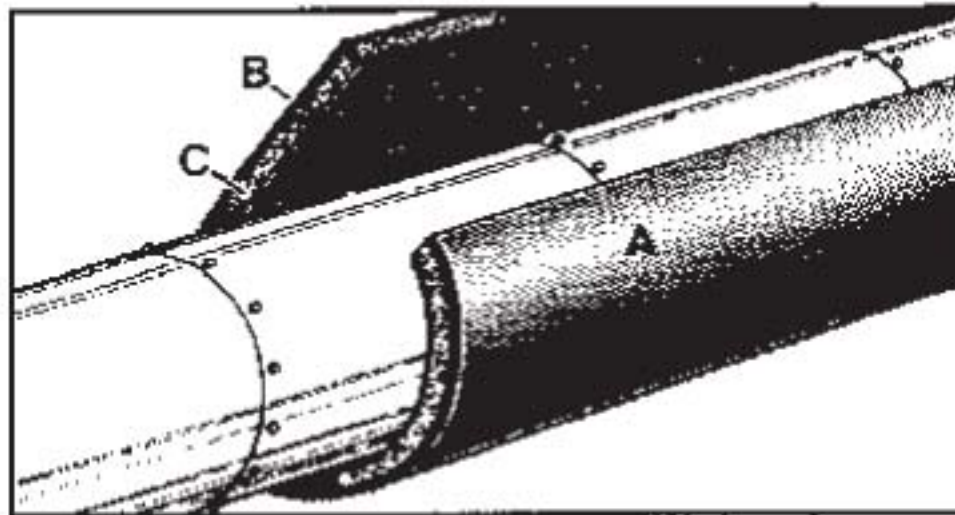


Flexible - Decoupled NOISE BARRIER



BARYMAT BM-1C

BM-1C is an extremely versatile noise control composite. It consists of (from the top down) **A**, a clear, tough polyester cover for contamination and weather resistance, **B**, a loaded, flexible, 1.6 lb. per sq. ft. barrier for transmission loss, **C**, a 0.25 in. urethane foam decoupler. Barymat BM-1C is very effective as an acoustic lagging to reduce breakout noise in pipes and ducts and can be used to increase transmission loss in walls and ceilings. BM-1C is easy to cut with common utility knives. Installation is very simple. Sections should overlap to eliminate any gaps in the barrier and maintain best acoustic performance. For Secure and permanent installations use reinforced duct-tape, bands or specified adhesive - available from Industrial Metal Fabricators.

HIGH PERFORMANCE - 20 to 40 dBA Reductions

Chart shows typical performance when bonded to 16 gauge steel. Performance will vary according to mass (thickness) of material it is adhered to.

| Transmission Loss (dB)/Frequency (Hz) | | | | | | |
|---------------------------------------|-----|-----|------|------|------|-----|
| 125 Hz | 250 | 500 | 1000 | 2000 | 4000 | STC |
| 23 | 23 | 30 | 42 | 47 | 53 | 34 |

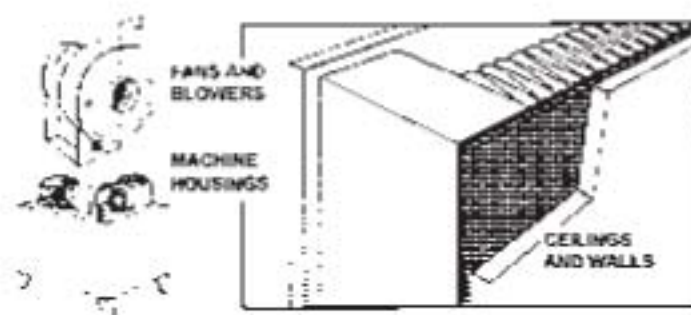
MATERIAL DATA

SHEET SIZE 54" x 72" (27 sq. ft.)
ROLL SIZE 54" x 30' (135 sq. ft.)
THICKNESS Approx. .3125 in.
COMPOSITE WEIGHT 1.7 lb./sq. ft.
Where weight restrictions are a consideration, BM-1A, with a 1.0 lb. per sq. ft. barrier is available.

RELATED TECHNICAL REFERENCE

| Data Sheets Available: | Sheet Number |
|-------------------------------|--------------|
| BARYMAT BM-1C (& BM-1A) | 3.501 |
| ADHESIVES | 3.901 |
| TAPES | 3.903 |
| BM-1C in Walls/Pipes & Ducts, | 3.806/3.810 |

**BM-1C IS USED AS AN EXTERNAL 'WRAP'
OR LIMP BARRIER WITHIN STRUCTURES
TO CONTROL NOISE LEAKAGE OR
PENETRATION.**



IDEAL FOR: INDOOR AND OUTDOOR USE

- DUCTING
- STACKS
- MACHINE HOUSINGS
- HYDRAULIC SYSTEMS
- PIPING
- FANS
- CABINETS
- CEILING AND WALLS
- GAS LINES
- BLOWERS
- PANELS
- CYCLONES
- PUMPS

CORPORATE OFFICE

288 Inshes Avenue
Chatham, Ontario
N7M 5L1

Phone: (519) 354-4270
Fax: (519) 354-4193